



NetVanta 3130

Fixed-port ADSL Access Router

Product Features

- Affordable routing solutions for business class ADSL networks
- Integral four-port managed Ethernet switch
- Innovative ADSL2+ technology provides further reach and higher bandwidth (up to 25 Mbps)
- Interoperable with other NetVanta product offerings and carrier-based ADSL service offerings
- Built-in analog modem for dial backup or remote management
- Standards-based routing/switching protocols, based on the widely deployed NetVanta Series
- Feature-rich ADTRAN Operating System (AOS)
- Stateful inspection firewall for network security
- IPSec VPN for secure corporate connectivity across the Internet
- Recognizable Command Line Interface (CLI) eliminates retraining
- User-friendly Web-based Graphical User Interface (GUI)
- NAT-compatible SIP ALG for VoIP
- Industry-leading five-year North American warranty

The NetVanta® 3130 is a fixed-port ADSL/ADSL2/ADSL2+ IP access router with an integral four-port Ethernet switch. It provides a single ADSL network interface, four auto-sensing 10/100Base-T Ethernet interfaces, and an analog modem interface for dial backup or remote management. This product is ideal for carrier bundled service offerings and enterprise Internet access for secure, high-speed corporate connectivity. In addition to supporting ADSL (Annex A), and ADSL2, the NetVanta 3130 supports today's most advanced ADSL technology, ADSL2+, for applications taking advantage of its greater reach and higher bandwidth, up to 25Mbps. A variety of WAN protocols are supported including ATM, PPP over ATM, and PPPoE over ATM.

Standards Protocols

This versatile hardware platform is further complemented by the ADTRAN® Operating System (AOS). The AOS allows for support of standards-based switching, VLAN tagging, static and default routes, and demand routing, for fast, accurate network convergence using routing protocols such as BGP, OSPF, and RIP.

Security

The AOS provides a powerful, high performance stateful inspection firewall. It examines all incoming and outgoing packets against the security policies established by the IT manager. In addition, the firewall can identify and protect against common Denial of Service (DoS) attacks like TCP syn flooding, IP spoofing, ICMP redirect, ping of death, and IP reassembly problems.

VPN

The NetVanta 3130 also supports up to five simultaneous IPSec VPN tunnels and encryption algorithms like DES, 3DES, and AES. By supporting IPSec, the NetVanta 3130 is fully compatible with other IPSec VPN-equipped NetVanta products.

Quality of Service (QoS)

QoS is also supported for delay sensitive traffic like VoIP or video. To prioritize mission-critical traffic and control network congestion, the NetVanta 3130 uses Low Latency Queuing, Weighted Fair Queuing (WFQ), Class-based WFQ, and DiffServ marking to establish the priority of IP packets routed over the WAN.

VoIP Ready

In combination with the QoS features, a specialized SIP Application Layer Gateway (ALG) allows SIP traffic to traverse NAT-enabled firewalls. For enterprise networks, this interoperability allows IP PBXs, phones, and other SIP-based devices to set up, tear down, and pass voice and call control messages seamlessly through the integral NAT-enabled firewall.

Administration

The AOS offers a standard Command Line Interface (CLI) that mimics the widely adopted, industry *de facto* standard. The sequence of commands to configure similar devices is almost identical, virtually eliminating training costs associated with relearning a new operating system or costly industry certifications. The CLI also allows for configuration scripts to be used, saved, and downloaded as a quick and easy recovery mechanism. In addition, an intuitive Web-based GUI provides step-by-step configuration wizards, management capability, and the ability to upload firmware updates.





ADTRAN, Inc.
Attn: Enterprise Networks
901 Explorer Boulevard
Huntsville, AL 35806

P.O. Box 140000
Huntsville, AL 35814-4000

256 963-8000 voice
256 963-8699 fax

General Information
800 9ADTRAN
info@adtran.com
www.adtran.com

Pre-Sales Technical Support
800 615-1176 toll-free
application.engineer@adtran.com
www.adtran.com/support

Where to Buy
877 280-8416 toll-free
channel.sales@adtran.com
www.adtran.com/where2buy

Post-Sales Technical Support
888 423-8726
support@adtran.com
www.adtran.com/support

ACES Installation & Maintenance Service
888 874-ACES
aces@adtran.com
www.adtran.com/support

International Inquiries
256 963 8000 voice
256 963-6300 fax
international@adtran.com
www.adtran.com/international

For the regional office nearest you, visit:
www.adtran.com/regional

To download a searchable version of the ADTRAN Enterprise Networks Catalog, visit:
www.adtran.com/ecatalog

For more information regarding ADTRAN's export license, please visit
www.adtran.com/exportlicense



ADTRAN is an ISO 9001, ISO 14001, and a TL 9000 certified supplier.

61700610L2-8B AOS 13.1 September 2006
Copyright © 2006 ADTRAN, Inc.
All rights reserved.

NetVanta® 3130

Fixed-port ADSL Access Router

Physical Interface

- **WAN:** ADSL/ADSL2/ADSL2+ Interface
ADSL ITU G.992.1 (Annex A)
ADSL ITU G.992.2 (Annex A) G.Lite
Extended Reach ADSL (RADSL)
ADSL2 ITU G.992.3 (Annex A)
ADSL2+ ITU G.992.5 (Annex A)

- **LAN:** Four-port, Auto-sensing Ethernet Switch
10/100Base-T Full Duplex (RJ-45)

- **Backup:** Analog 33.6 kbps modem (RJ-45)

Diagnostics LEDs

- Power (Stat)
- WAN (DSL)
- VPN
- Dial Backup
- LAN (Switch Ports)

Memory

- **RAM:** 64 MB
- **FLASH:** 16 MB

Protocols

- eBGP/iBGP
- OSPF
- RIP (v1 and v2)
- Demand Routing
- GRE
- Frame Relay
- Multilink Frame Relay
- PAP and CHAP
- PPP
- Multilink PPP
- PPPoE
- IGMP v2
- RFC 1483
- HDLC
- PPP Dial Backup
- Multihoming

Quality of Service

- Low Latency, Weighted Fair Queuing (WFQ), and Class-based WFQ
- DiffServ Packet Marking and Recognition
- Frame Relay Fragmentation

Switching

- Weighted Round Robin (WRR) and Strict Priority Queuing
- VLAN Support (802.1Q)
- Spanning Tree (802.1D)
- Rapid Spanning Tree (802.1w)
- 802.1p and DiffServ QoS

Administration

- Familiar Command Line Interface (CLI)
- Web-based GUI
- n-Command® support
- SNMP v3
- SYSLOG Logging
- Email Alerts (SMTP)
- Policy Statistics

DHCP

- Client, Server, and Relay

Security

Firewall

- Stateful Inspection Firewall
- Denial of Service (DoS) Protection
- Access Control Lists
- Application Level Gateways (ALGs)

Network Address Translation

- Basic NAT (1:1), NAT (Many:1), and Port Translation
- NAT compatible SIP ALG

Secure Management

- Multi-level access control
- RADIUS AAA
- TACACS+
- SSH CLI and SSL GUI

Virtual Private Network (VPN)

- **IPSec Tunnel Mode:** 5 Tunnel
- **Encryption:** DES, 3DES, and AES
- **Diffie Hellmn Group Support:** Group 1: MODP 768 and Group 2: MODP 1024
- **Hash Algorithms:** MD5-HMAC and SHA1-HMAC
- **Authentication Mechanisms:** XAUTH, Digital certificates, Preshared keys, and Secure ID
- **Key Management:** IKE (ISAKMP/Oakley)
- **IKE Modes:** Main and Aggressive
- Dead Peer Detection
- NAT Traversal v2

Environment

- **Operating Temperature:** 0° to 50 °C (32° to 122 °F)
- **Storage Temperature:** -20° to 70 °C (-4° to 158 °F)
- **Relative Humidity:** Up to 95%, non-condensing

Physical

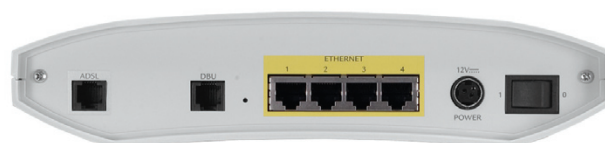
- **Chassis:** Self-standing, plastic enclosure
- **Dimensions:** 2.25" H, 9.25" W, 6.625" D
- **Weight:** 1 lb.
- **Power:** 12 VDC, 800 mA, 6 W (AC to DC Power Adapter Included)

Agency Approvals

- FCC Part 68
- Industry Canada CS03
- CE Mark, UL & Canadian UL (CUL), IEC/EN, CSA

Ordering Information

Equipment	Part #
NetVanta 3130	1700610L2



Specifications subject to change without notice. ADTRAN and NetVanta are registered trademarks of ADTRAN, Inc. All registered trademarks and trademarks mentioned in this publication are the property of their respective owners.